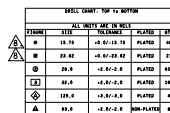


A

20. ALL PLATED AND NON-PLATED THROUGH HOLES ARE TO BE DRILLED AT PRIMARY DRILL STEP. ALL HOLE LOCATION TOLERANCES ARE TO BE $\pm .002$ IN REFERENCE TO THE PRIMARY DATUM.
21. FINISHED PCB MUST BE PANELIZED FOR ASSEMBLY ACCORDING TO CONTRACT MANUFACTURING REQUIREMENT. ADDITION OF .25" RAILS AND .125" NON-PLATED TOOLING HOLES ARE AT THE DISCRETION OF CONTRACT MANUFACTURER AND FAB HOUSE.

[illegible][illegible]