



MCU Bootloader for NXP Microcontrollers

MCUBOOT

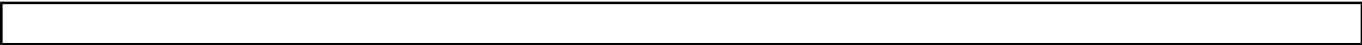
Last Updated: Dec 13, 2024

The MCU bootloader is a configurable flash programming utility that operates over a serial connection on supported NXP MCUs. The bootloader is delivered in two ways: as full source code that is highly configurable; or pre-programmed by NXP® into ROM or flash on select NXP MCUs.

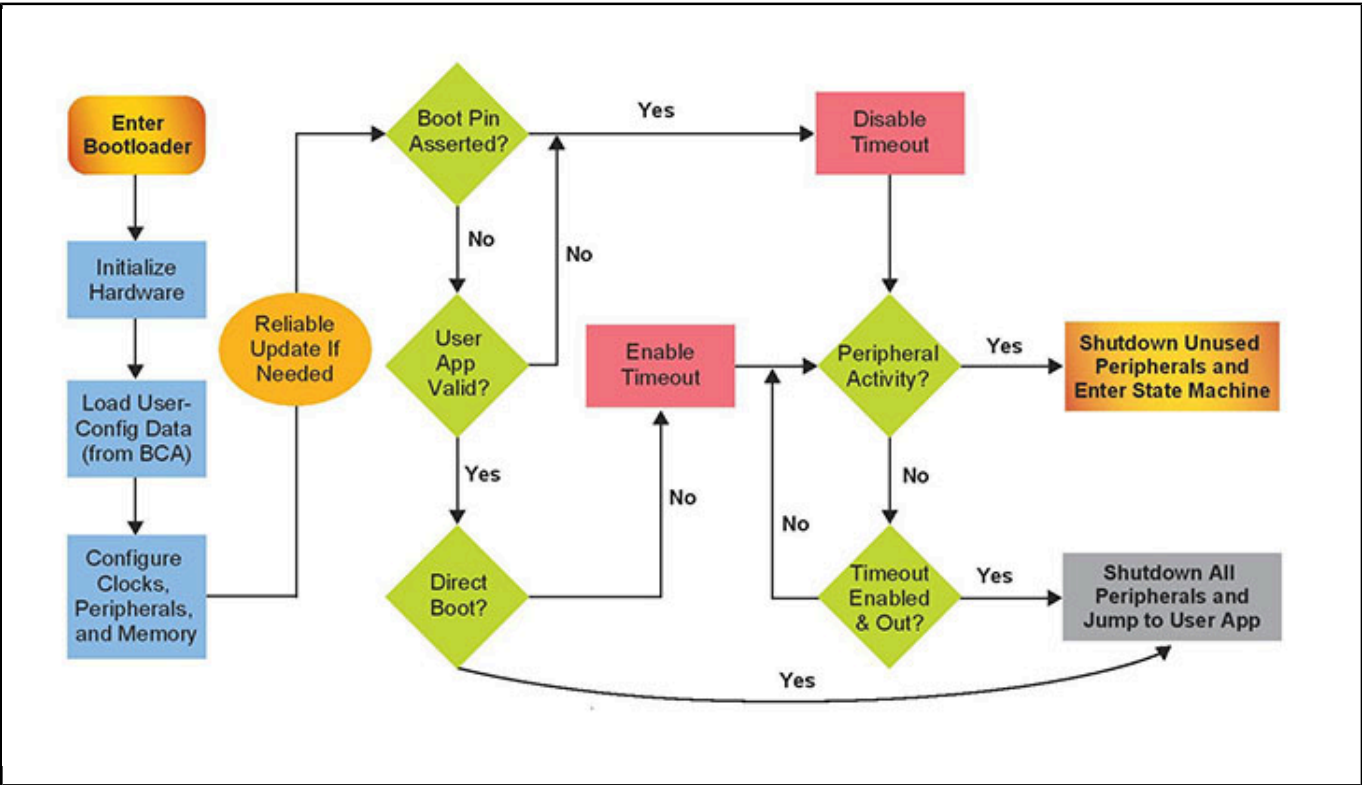
On more recently introduced devices the host side tools have been replaced by the [MCUXpresso SEC](#) tool and underlying reference code (permissively licensed) [Secure Provisioning SDK](#) which can be used to create custom programming and provisioning tools.

Previous host-side command line and GUI tools are available on this page to communicate with the bootloader. The MCU bootloader uses startup, header files, and peripheral drivers from older releases of MCUXpresso SDK.

MCU Bootloader Block Diagram Block Diagram



MCU Bootloader Startup Flow Diagram Block Diagram



View additional information for [MCU Bootloader for NXP Microcontrollers](#).

Note: The information on this document is subject to change without notice.

www.nxp.com

NXP and the NXP logo are trademarks of NXP B.V. All other product or service names are the property of their respective owners. The related technology may be protected by any or all of patents, copyrights, designs and trade secrets. All rights reserved. © 2025 NXP B.V.